

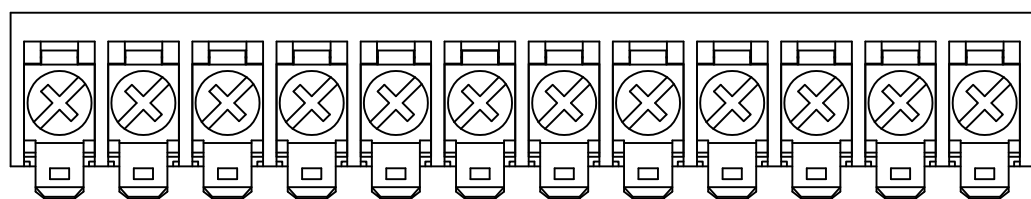
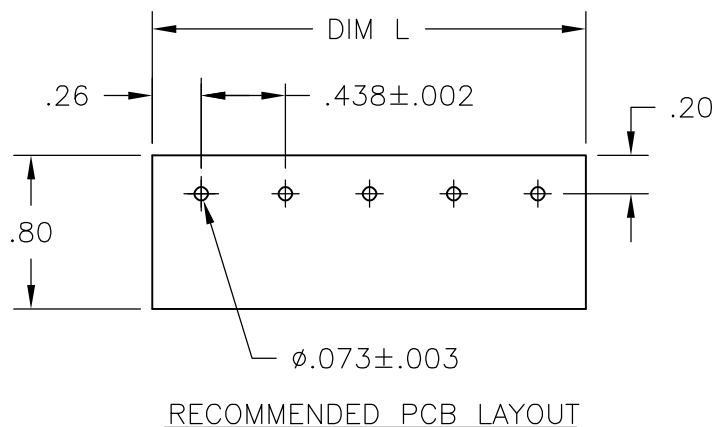
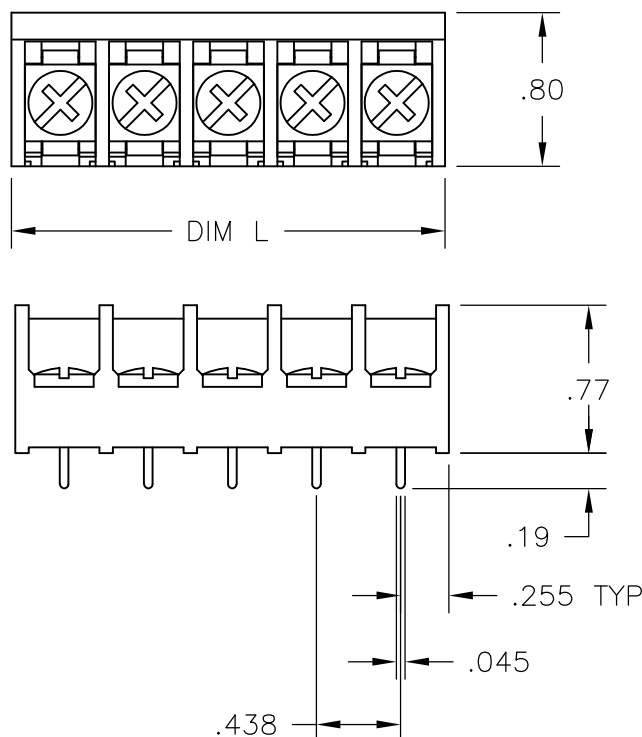
THIS DRAWING IS UNPUBLISHED. RELEASED FOR PUBLICATION
 © COPYRIGHT BY TYCO ELECTRONICS CORPORATION. ALL INTERNATIONAL RIGHTS RESERVED.

| LOC | DIST | REVISIONS | | | | | |
|-----|------|-----------|-----|---------------------------|---------|-----|------|
| | | P | LTR | DESCRIPTION | DATE | DWN | APVD |
| - | - | F | | REVISED PER ECO-09-019330 | 31AUG09 | HMR | CR |

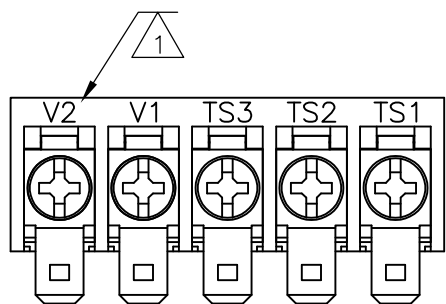
MATERIALS:
 HOUSING: THERMOPLASTIC, UL94V-0, BLACK.
 TERMINAL: BRIGHT TIN PLATED COPPER ALLOY.
 SCREWS: 8-32, ZINC PLATED STEEL.

ELECTRICAL:
 CURRENT RATING: 30A.
 VOLTAGE RATING: 600V.
 WIRE RANGE: 10-18 AWG (UL)
 10-22 AWG (CSA)

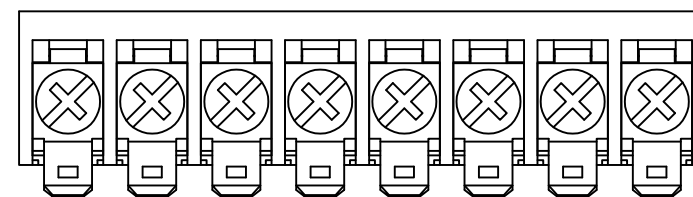
MECHANICAL:
 RECOMMENDED TORQUE: 20 IN-LB.
 OPERATING TEMP.: -40°C TO +120°C.



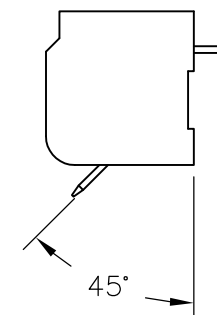
1-1437660-5



9-1437657-3



1-1437658-9



45°

- 1 MARKED WITH WHITE INK.
- 2 OBSOLETE PART NUMBER.
- 3 SCREWS TO BE BOTTOMED

| COMMENTS | DIM L REF | NO OF POS | CATALOG NUMBER | TE PART NO |
|------------|-----------|-----------|-----------------|-------------|
| - | 9.260 | 21 | 8PCV-21-007 | 8-1546159-4 |
| - | 8.823 | 20 | 8PCV-20-007 | 7-1437658-7 |
| - | 8.385 | 19 | 8PCV-19-007 | 1546565-8 |
| - | 7.948 | 18 | 8PCV-18-007 | 1546565-7 |
| - | 7.510 | 17 | 8PCV-17-007 | 1546565-6 |
| - | 7.073 | 16 | 8PCV-16-007 | 1546565-5 |
| - | 6.635 | 15 | 8PCV-15-007 | 1546565-4 |
| - | 6.198 | 14 | 8PCV-14-007 | 7-1546159-9 |
| - | 5.760 | 13 | 8PCV-13-007 | 5-1437658-6 |
| SEE FIGURE | 5.323 | 12 | 8PCV-12-001-010 | 1-1546098-2 |
| - | 5.323 | 12 | 8PCV-12-007 | 4-1437658-7 |
| - | 4.885 | 11 | 8PCV-11-007 | 4-1437658-1 |
| - | 4.448 | 10 | 8PCV-10-007 | 7-1546159-2 |
| - | 4.010 | 9 | 8PCV-09-007 | 1546565-3 |
| SEE FIGURE | 3.573 | 8 | 8PCV-08-001-010 | 1-1437658-9 |
| - | 3.573 | 8 | 8PCV-08-007 | 2-1437658-3 |
| - | 3.135 | 7 | 8PCV-07-007 | 1546565-2 |
| - | 2.698 | 6 | 8PCV-06-007 | 1437658-1 |
| SEE FIGURE | 2.260 | 5 | 8PCV-05-501 | 9-1437657-3 |
| - | 2.260 | 5 | 8PCV-05-007 | 9-1437657-0 |
| - | 1.823 | 4 | 8PCV-04-007 | 1546565-1 |
| - | 1.385 | 4 | 8PCV-04-003 | 1546119-3 |
| - | 1.385 | 3 | 8PCV-03-007 | 7-1437657-0 |
| - | .948 | 2 | 8PCV-02-007 | 5-1546159-6 |

THIS DRAWING IS A CONTROLLED DOCUMENT.

| | | | | | |
|------------------|------------|---------|---|---------------|---------------|
| DWN | S SCHLEGEL | 2/25/03 | Tyco Electronics Corporation Harrisburg, PA 17105-3608 | | |
| CHK | S YODER | 10/8/04 | | | |
| APVD | S YODER | 10/8/04 | | | |
| PRODUCT SPEC | NAME | | | | |
| APPLICATION SPEC | | | 8PCV-XX-007 ASSEMBLY | | |
| WEIGHT | - | SIZE | CAGE CODE | DRAWING NO | RESTRICTED TO |
| CUSTOMER DRAWING | | A3 | 00779 | C-7-1437657-0 | - |
| MATERIAL | | SCALE | | SHEET | REV |
| - | | 1:1 | | 1 OF 1 | F |